

The Marshall JCM 900 SL-X.

This unit has no output and is in good condition. This is one of my favorite units to work on! I think I just had such a great time in the 70's 80's. This unit sports the EL34's which has a way different sound than the last report on the older Marshall with 6550's of course.



Fuses were good and unit did power up. The line cord is IEC and overall condition is good. Output was changed for 8 ohm bench testing and output level was set at LOW. Not sure why. Changed it to full power!



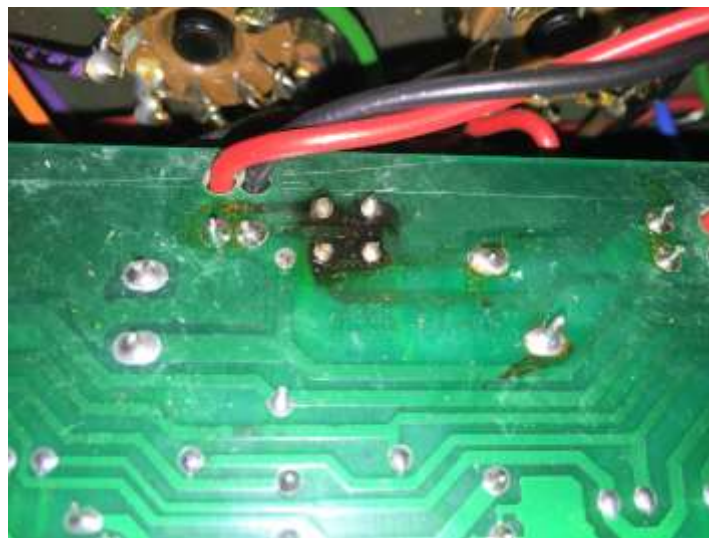
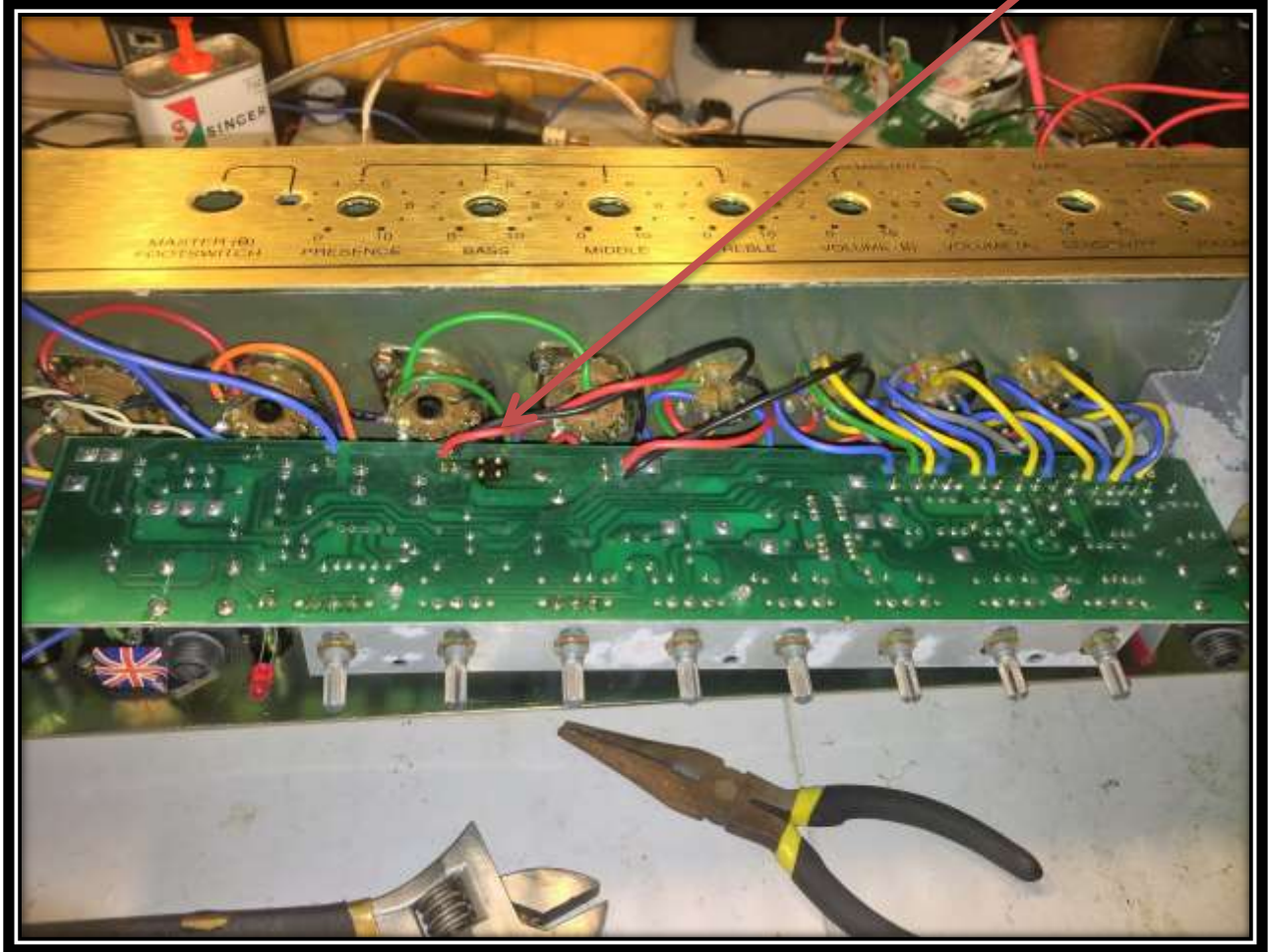
This needs to be fixed. Two of the springs are not seated correctly. The output springs are for 6550's not sure but think Marshall just did not care to changing sloppy top covers in case customer wanted to change to 6550's but they work fine anyway.



Before power up a full inspection of the unit was performed. An almost exploded cap was found!

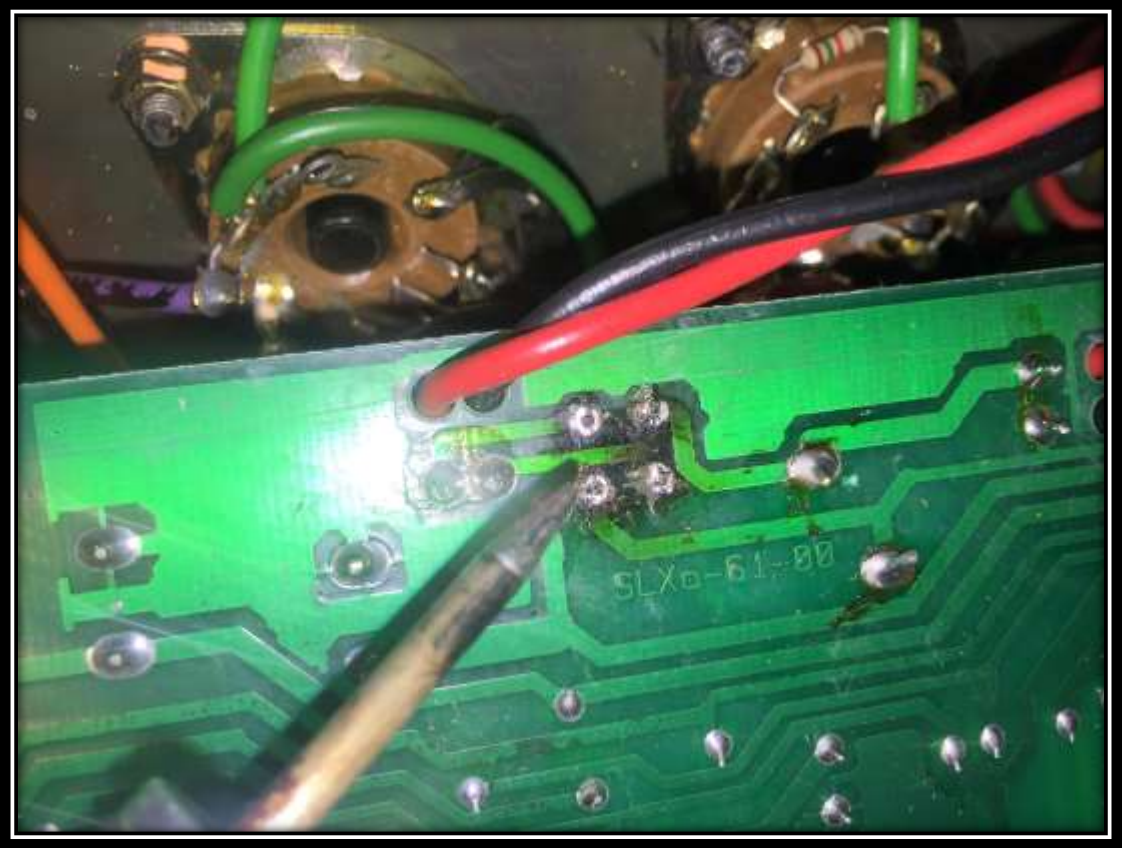


The board was dropped and massive heat was found on the diode bride area of the PCB!

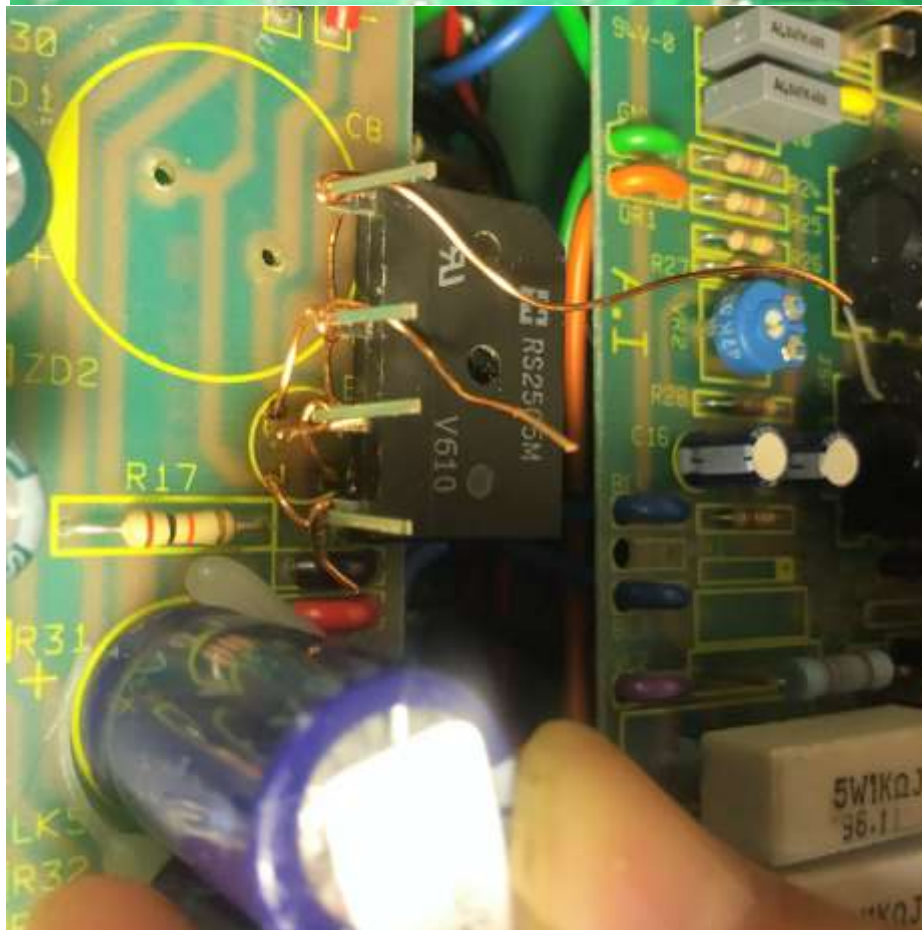
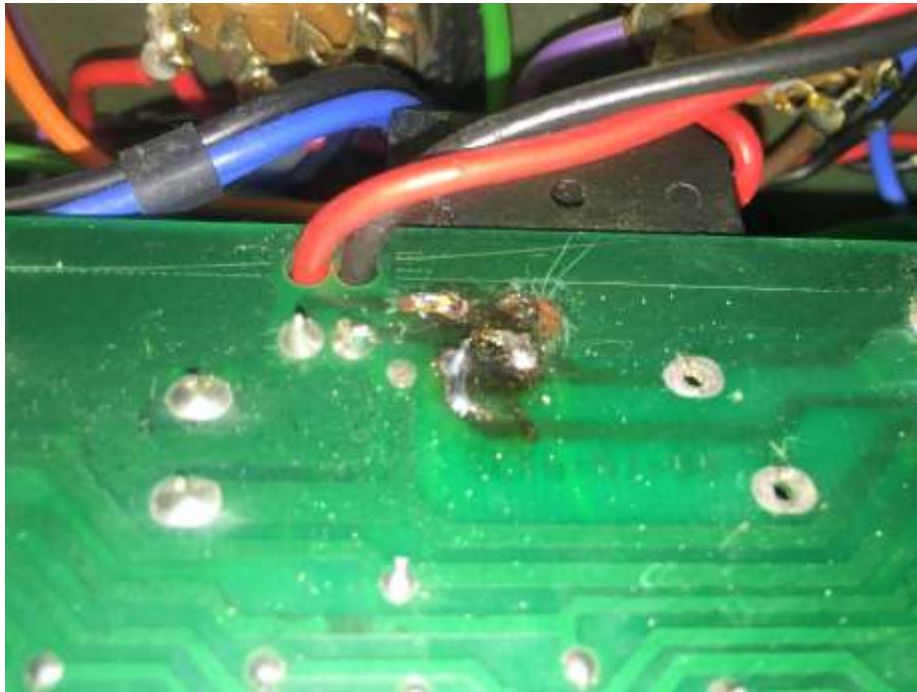


The traces are gone and delamination has occurred...not good.

The bridge and cap were removed from the PCB.



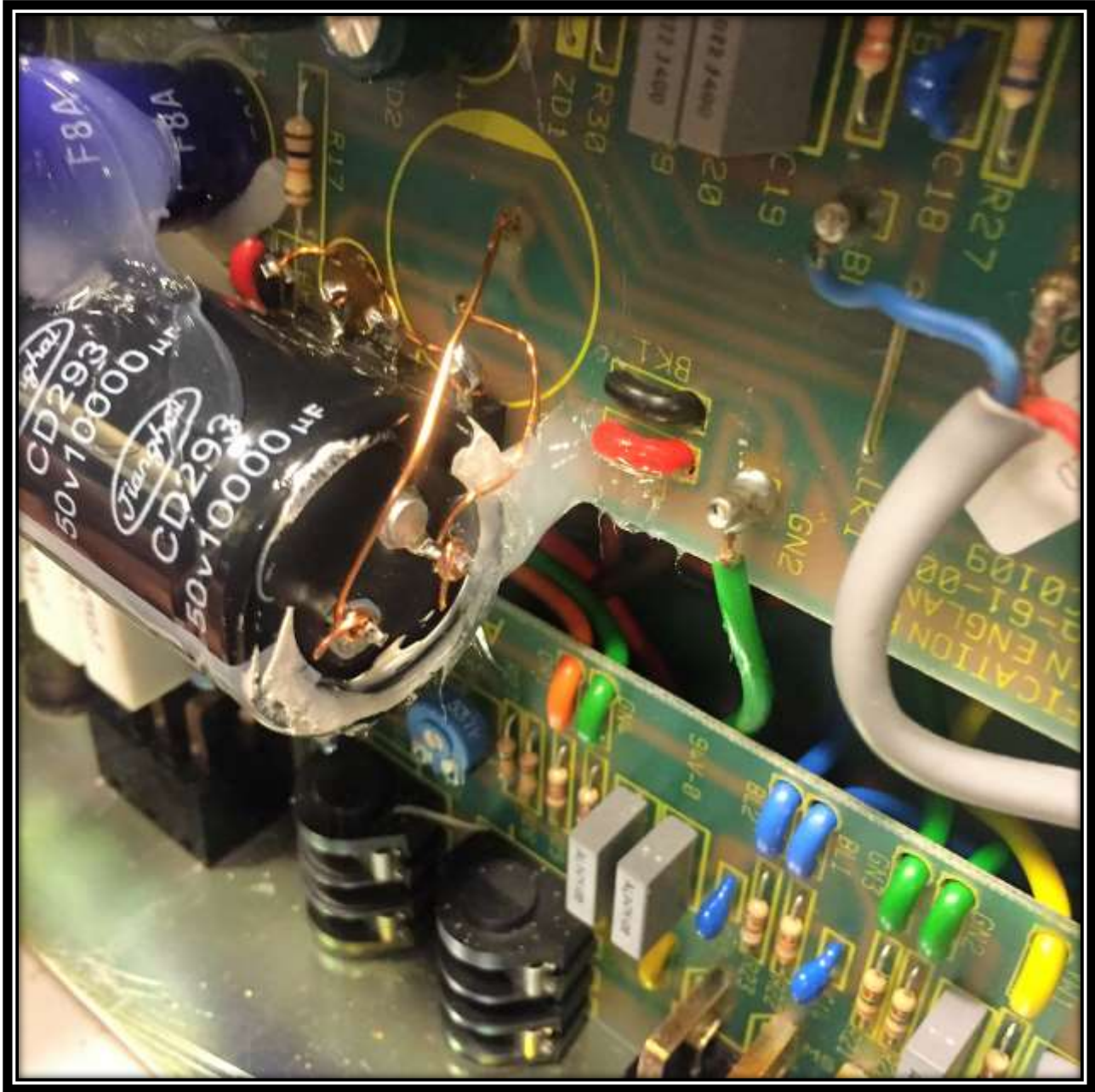
Insulated mag wire was used and new larger bridge was installed. Copper traces were extended with mag/buss wire where damage had caused an open circuit on the PCB.



Better bridge and cap were installed and mag wired. This is the pre-amp DC heater supply so it not going to ever fail anytime soon with this modification.



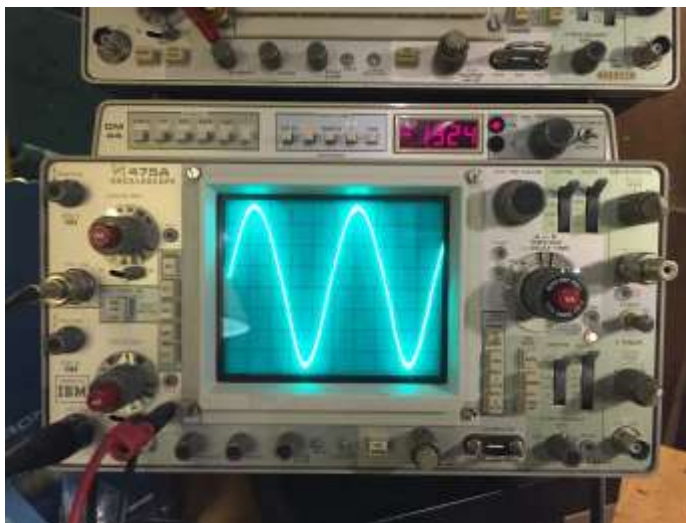
RTV was added for any shock or vibration. Diode Bridge was secured to PCB with super glue.



All tubes were check with outputs good but the 12AX7's were bad like this one at 1000.



EL34's all good. The unit was powered back up and sine wave on load great with low distortion. This is at low level then at close to full power. Bias was set for best non-cross over distortion as you can see the EL34's have a totally different type soft clip than other tubes and you can really hear the difference.



Unit is ready for the listen test. The unit shows close to 80 Watts RMS and super clean at 21WRMS.

